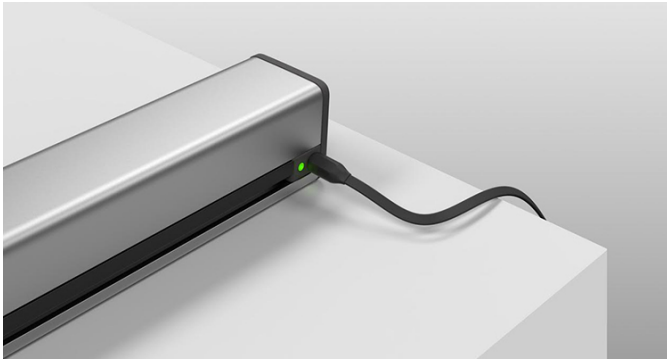


SI Debuts Wireless (Including Power) Motorised Screens

Written by Alice Marshall
01. 02. 2018

Screen Innovations (SI) launches the Solo motorised screen at ISE 2018-- a screen the company says requires zero wiring, with power coming from a lithium core motor.



The Solo is charged via proprietary magnetic core SI claims provides over 2 years of life with a single charge. ISE 2018 hosts two variations of the Solo screen. The first, Solo, comes in a clear anodised cassette and is shown in a 100-inch configuration.

The second, Solo Pro, can be ordered in 12 different designer-selected colours and in low-voltage. At ISE it seen in a Ferrari red cassette colour and suspended on aircraft-grade cables.

In addition, ISE 2018 hosts a new type of Zero Edge screen-- the Zero Edge Pro, a screen described as 36 screens in one.

Go [Screen Innovations](#)