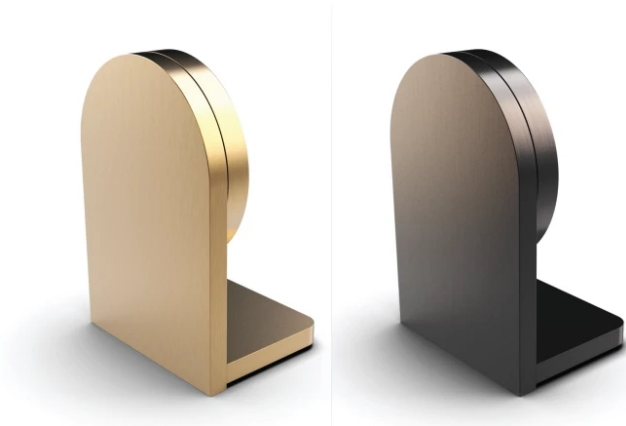


Lutron Adds Finishes to Palladiom System

Written by Frederick Douglas
31. 10. 2018

Lutron introduces a pair of bracket finishes to the Palladiom Shading System-- Satin Brass and Dark Bronze, rounding out the current bracket finish offering of Satin Nickel, Black Anodized, Clear Anodized, and Pure White.



All Palladiom finishes are hand-polished, with a unibody structure combining superior workmanship with ingeniously hidden electronics, at least according to Lutron. The designer-facing solutions should meet the needs of customers wanting to accentuate a style evoking a legacy of culture and taste.

The company also offers a decorative cover, an aesthetic extension sliding over the bracket to mask visible fabric edges on the roll, and to more prominently display the shade hardware. In addition, Lutron has an extended bracket to support 3.5-inch rollup diameters, expand the selection of fabrics able to cover a 12-foot tall window with the solution.

The above mentioned finishes and extended brackets ship on Q1 2019.

Go [Lutron Palladiom Shading System](#)